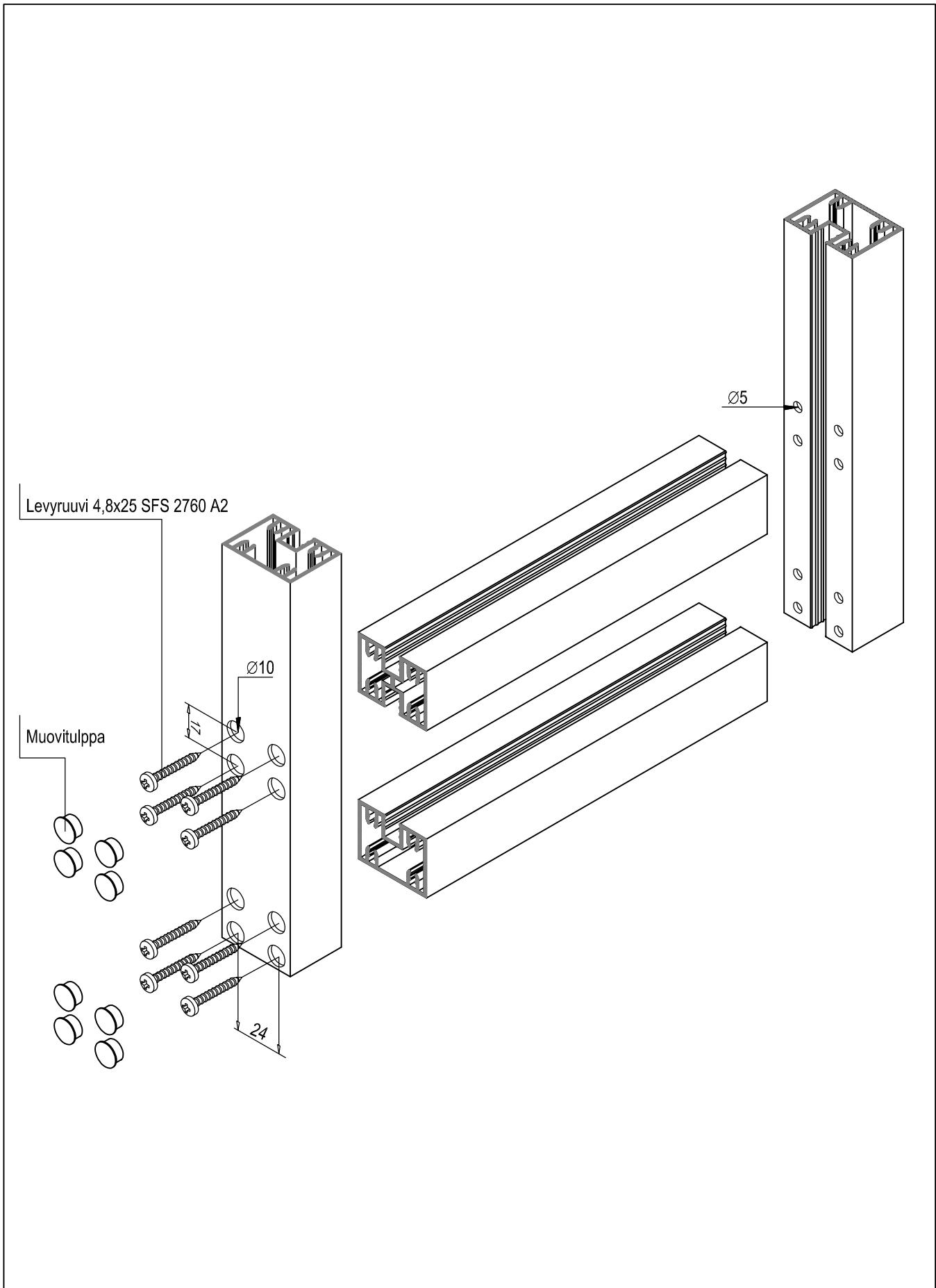


# 13 R28 FILIA

## Sisällysluettelo

- 1 Liitokset
- 2 Profiilit 1:1
- 3 Tarvikkeet
- 4 Lasitus
- 5 Liukuoven valmistus
- 6 Harjatiivisteellisen liukuoven valmistus



01.07.2013

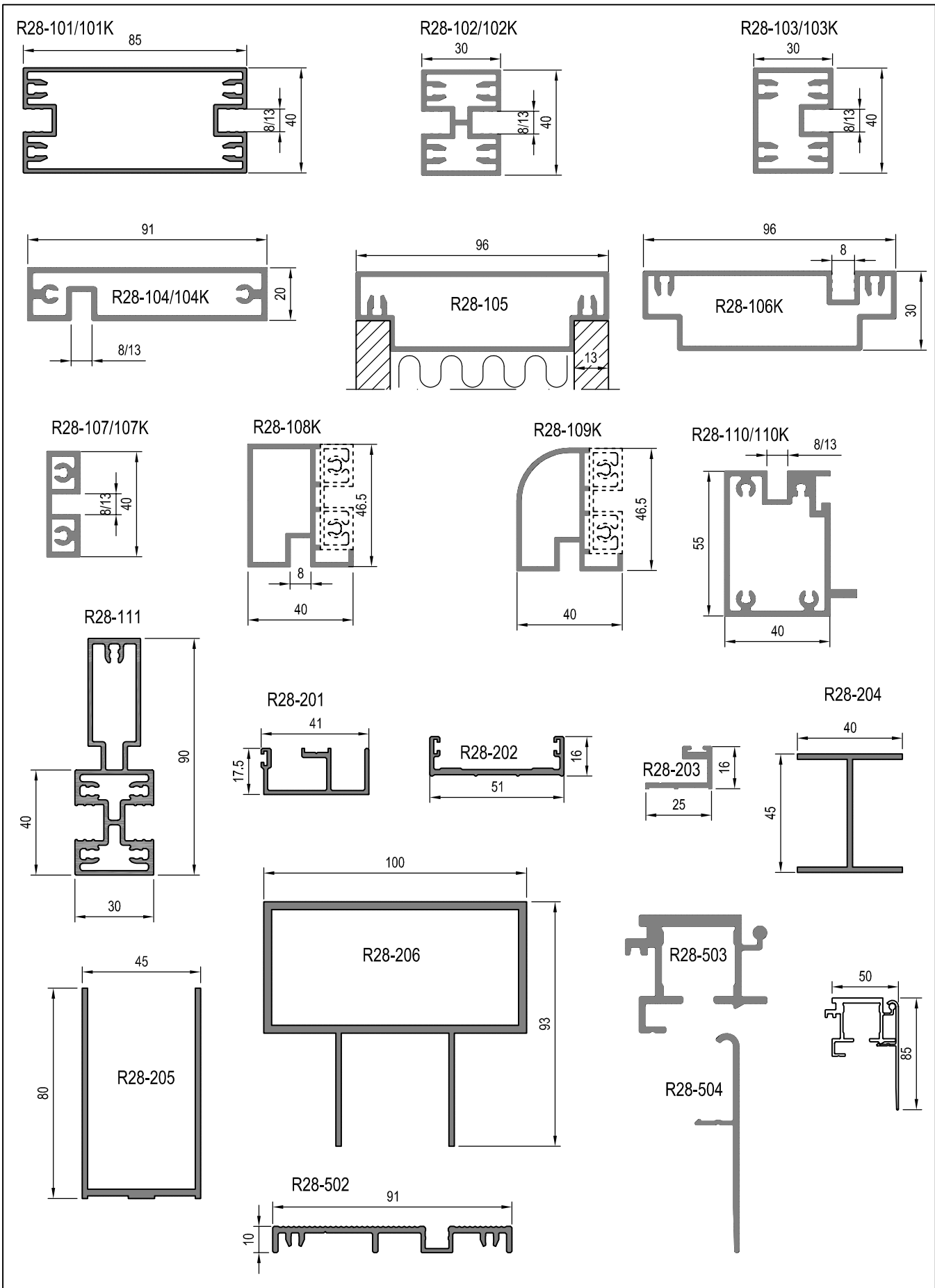
10



# R28 FILIA

1

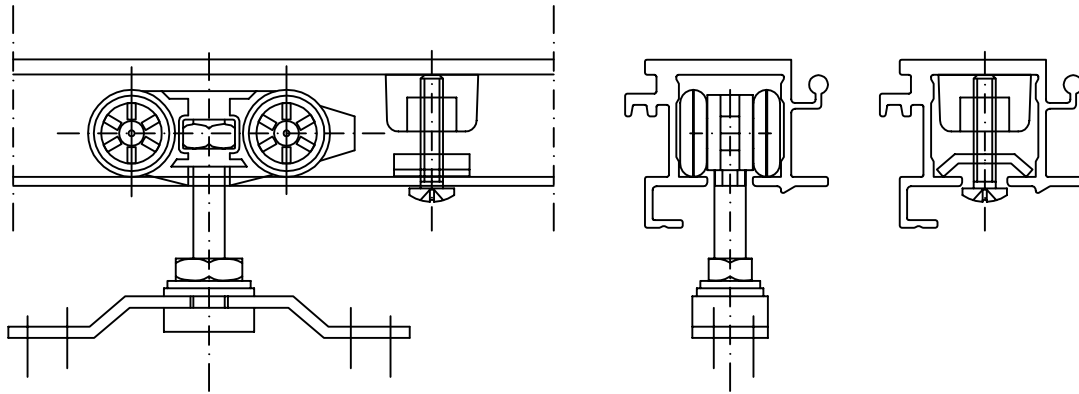
Liitos










# R28 FILIA

Profilit 1:2

R28-753 (liukuoven rullasto)

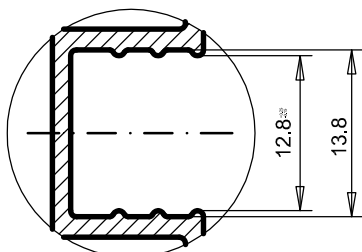


## Tiivisteet

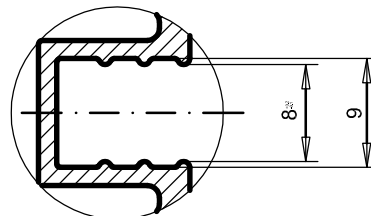
R28-676 (6 mm)		613	
R28-678 (8 mm)			
R28-6710 (10mm)		614	
R28-675K (5 mm)			
R28-676K (6 mm)			

## Lasiurat

Vakio = 13 mm



K (kapea) = 8 mm



01.07.2013

10

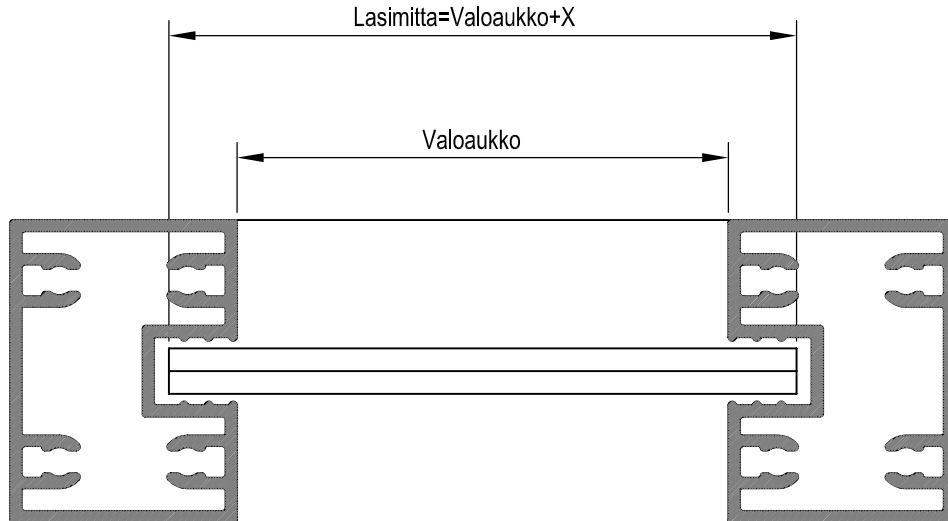
**NOKIAN**  
PROFILIT



# R28 FILIA

3

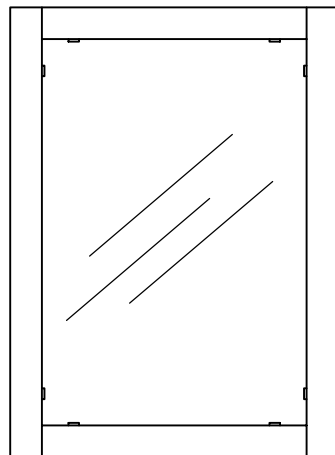
Tarvikkeet



Tiiviste	X	Lasinpaksuus	Materiaali
R28-676	13	6	EPDM
R28-677	15	8	EPDM
R28-678	17	10	EPDM
R28-675K	16	5	EPDM
R28-676K	17	6	EPDM

Käytettäessä massalasitusta keskitetään lasi käyttämällä 20 mm pitkiä tiivisteiden pätkiä.

Tukien sijoitus massalasituksessa



# R28 FILIA

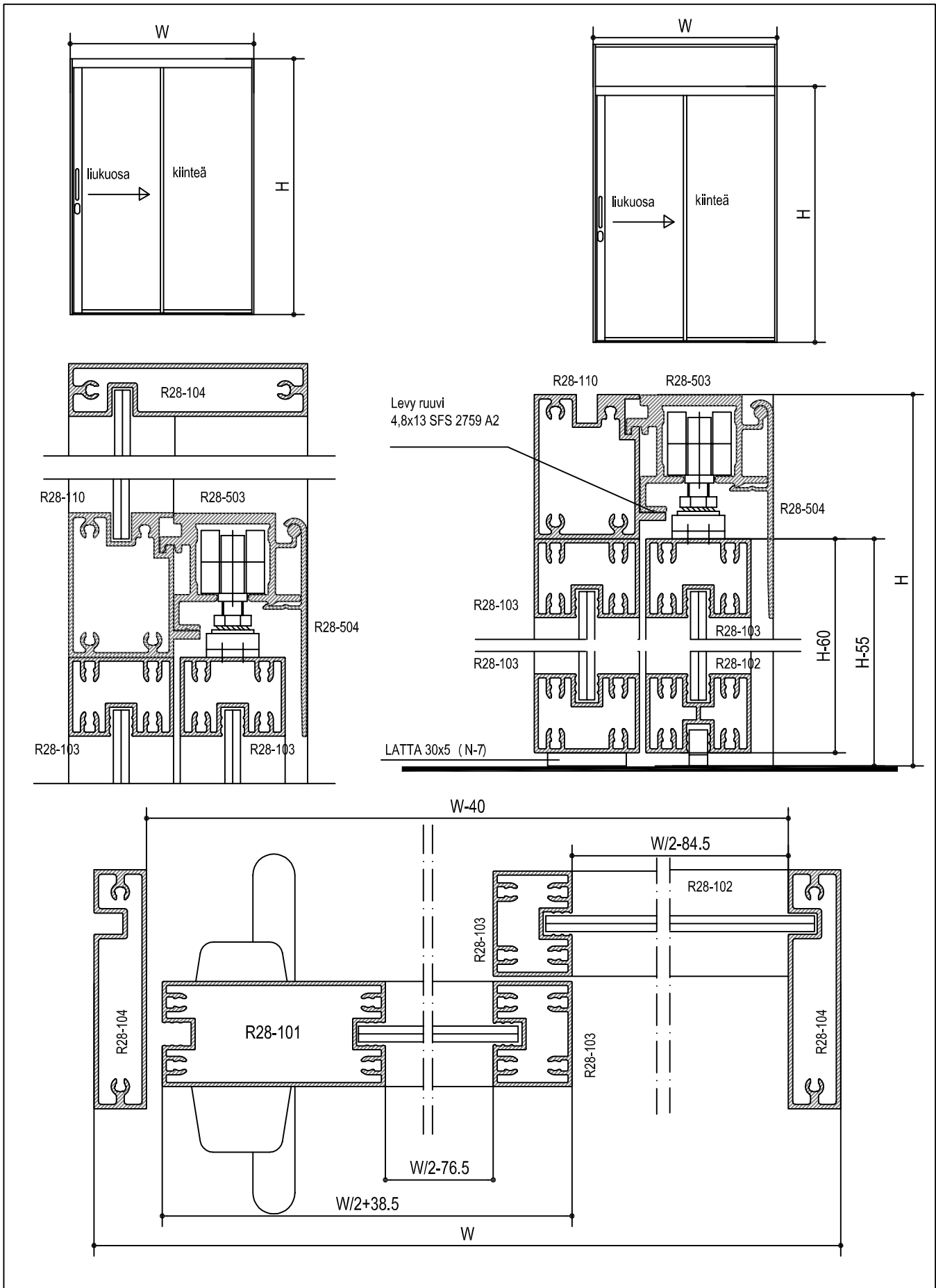
**NOKIAN**  
PROFILIT

01.07.2013

10

Lasitus

4



01.07.2013

10

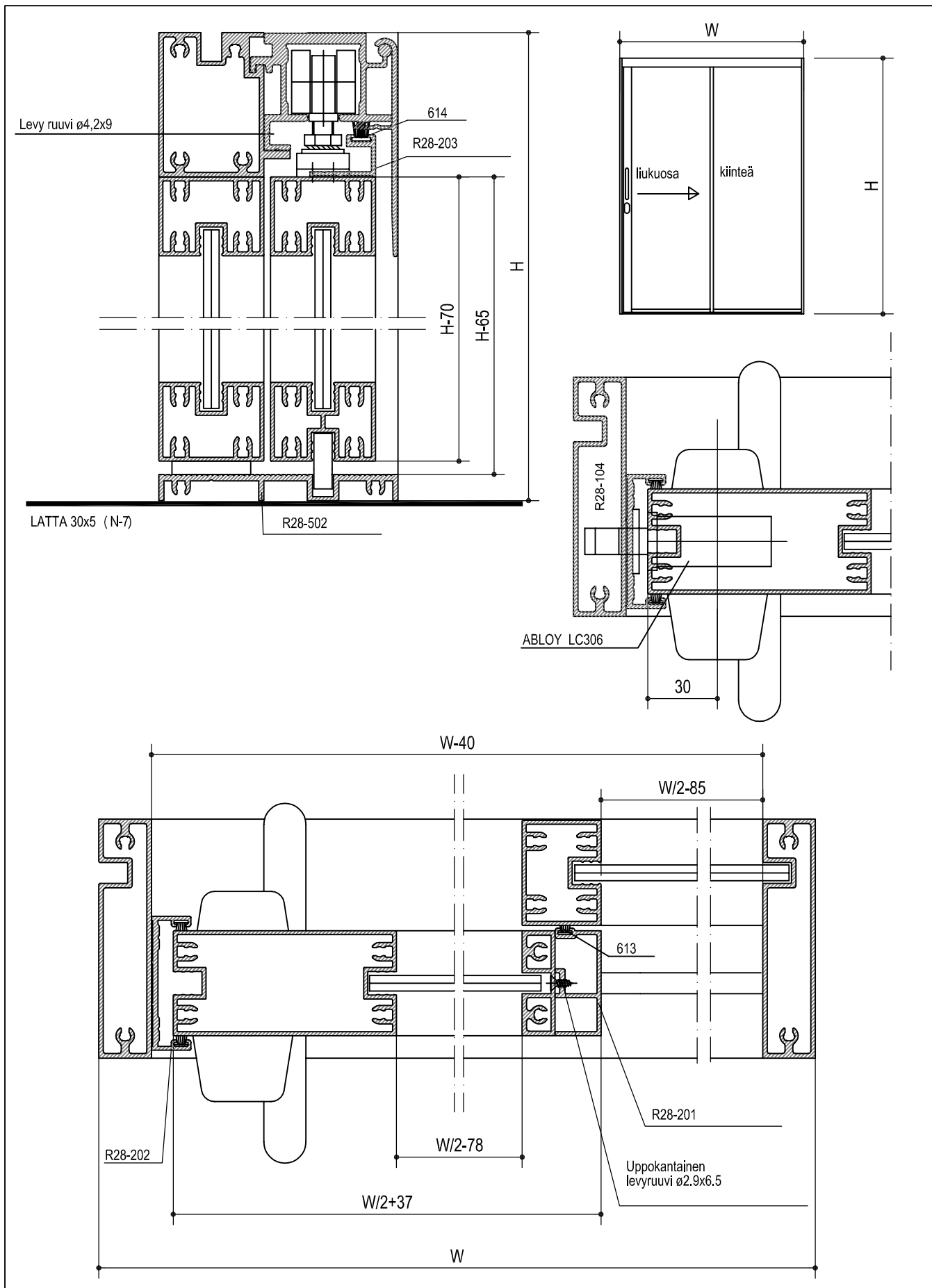
**NOKIAN**  
PROFILIT



**R28 FILIA**

5

Liukuoven valmistus 1:2



# R28 FILIA

Harjatiivisteellinen liukuovi 1:2


**NOKIAN  
PROFILIT**

01.07.2013

10

6